



St. PETER'S COLLEGE OF ENGINEERING AND TECHNOLOGY :: CHENNAI

Affiliated to Anna University, Chennai & Approved by AICTE
Accredited by NAAC with 'A' Grade & ISO 9001:2015 Certified Institution

PROOFS FOR THE MEASURES INITIATED BY THE INSTITUTION FOR THE PROMOTION OF GENDER EQUITY



St. PETER'S COLLEGE OF ENGINEERING AND TECHNOLOGY :: CHENNAI

Affiliated to Anna University, Chennai & Approved by AICTE
Accredited by NAAC with 'A' Grade & ISO 9001:2015 Certified Institution

In our institution, more than 50% of existing female faculty members head very essential roles in various committees such as Head of the Departments and the Coordinators of various nodal activities of eminence. Indeed, our institution is directed by the Chairperson, Dr.T. Banumathi on matters of female welfare, a driving force for all students and employees. Many vital roles are being led by our female faculty members and they are listed below.

S.No	Name of the Faculty	Responsibilities
1.	M. Mohana Priya	Chairman/ Women Grievances Cell
2.	S. Booma Devi	Member/ Women Grievances Cell
3.	G. Amudha	Member/ Women Grievances Cell
4.	S.K.Nathiya	Member/ Women Grievances Cell
5.	K. Chitrakala	Anti- Ragging Squad
6.	K. Wisely Joe	Anti- Ragging Squad
7.	S. Jeyanthi	Disciplinary and Welfare Committee Member
8.	Vanishree	Disciplinary and Welfare Committee Member
9.	Preethi Rebecca	Internal Complaints Committee Member
10.	J. Keren Vinolia	Internal Complaints Committee Member
11.	C Evangeline	Internal Complaints Committee Member
12.	Taj Sabreen	Internal Complaints Committee Member
13.	Jeni Magdalene V E	POSH Cell Committee Member
14.	V. S. Veena	POSH Cell Committee Member
15.	V Uma Karthika	POSH Cell Committee Member
16.	S Maria Vensa	POSH Cell Committee Member
17.	R Valarmathi	POSH Cell Committee Member
18.	K. Manjula	Sports Coordinator
19.	S Sivakami	Sports Coordinator
20.	J Kayalvizhi	Sports Coordinator



St. PETER'S COLLEGE OF ENGINEERING AND TECHNOLOGY :: CHENNAI

Affiliated to Anna University, Chennai & Approved by AICTE
Accredited by NAAC with 'A' Grade & ISO 9001:2015 Certified Institution

Girls Students assigned important roles in various Club it is listed below:

S.No	Name of the Student	Name of the Club
1.	S Swetha	Science Awareness Club
2.	J Kavia	English Club
3.	P Kiruthika	Tamil Mandram
4.	J Archana	FAC

Facilities provided for Women

Safety of Girls in the college is an important priority that the institute has always an eye on Women's progress, safety and empowerment. Gender Equality is maintained in the college through various initiatives and actions for creating safe, secure and healthy atmosphere for the girl students. Nowadays, safe and secure campus is a challenge for college administrative. our institute always is in forefront of providing the safest ambiance in the college premises especially for girls and sensitization of the students is done through special lecture programs and functions inside the campus.

Specific initiatives and the respected key areas are shown in below as follows:

1. Safety and security with CCTV surveillance
2. Counselling
3. Common room
4. Ladies Hostels with CCTV surveillance
5. Sanitary Napkin Vending Machine
6. Suggestion box



St. PETER'S COLLEGE OF ENGINEERING AND TECHNOLOGY :: CHENNAI

Affiliated to Anna University, Chennai & Approved by AICTE
Accredited by NAAC with 'A' Grade & ISO 9001:2015 Certified Institution

1. Safety and security with CCTV surveillance

- ✓ Our institution ensures presence of strong security personnel in and around the campus to maintain safe and secure environment to girl students in the college and in the hostels.
- ✓ Visitor's record is maintained by security personnel at each point, in front of the college and the girls hostel to ensure the entry of visitors and to avoid entry of unauthorized persons.
- ✓ Enough number of security staff is always on rounds around the campus to prevent unacceptable events inside the campus.



Entrance Gate



St. PETER'S COLLEGE OF ENGINEERING AND TECHNOLOGY :: CHENNAI

Affiliated to Anna University, Chennai & Approved by AICTE
Accredited by NAAC with 'A' Grade & ISO 9001:2015 Certified Institution

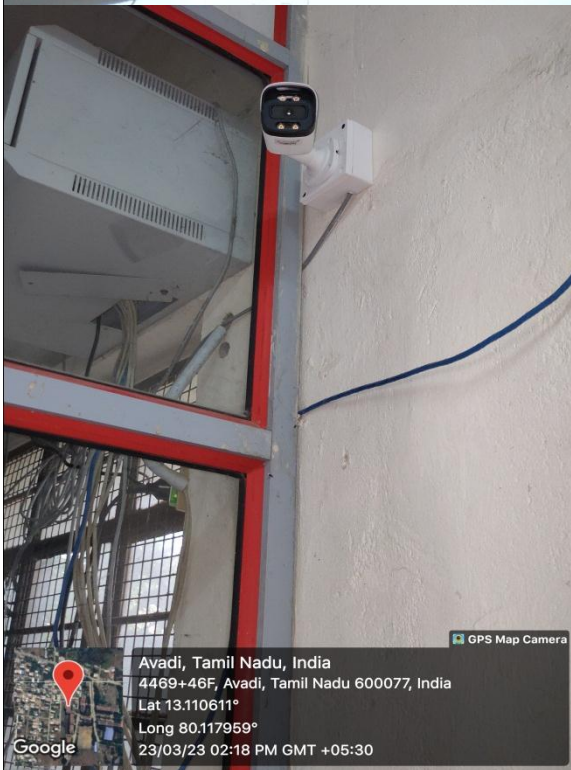
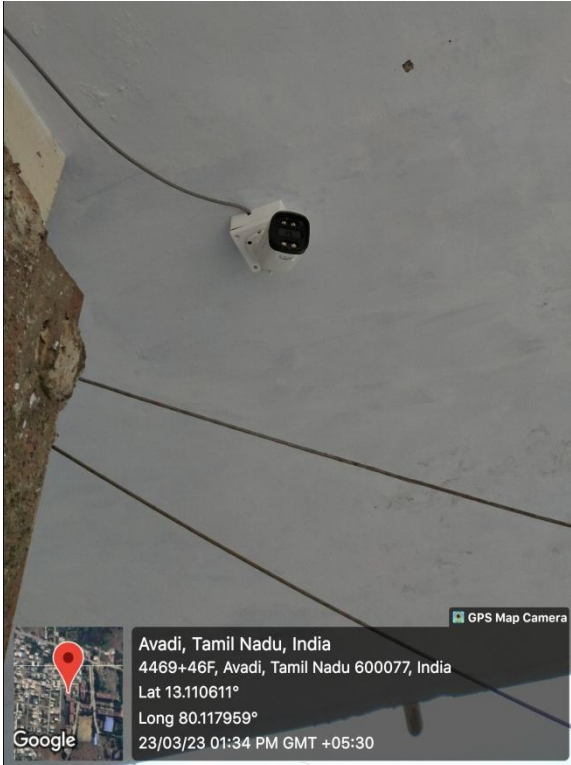


CCTV Camera



St. PETER'S COLLEGE OF ENGINEERING AND TECHNOLOGY :: CHENNAI

Affiliated to Anna University, Chennai & Approved by AICTE
Accredited by NAAC with 'A' Grade & ISO 9001:2015 Certified Institution



CCTV Camera



St. PETER'S COLLEGE OF ENGINEERING AND TECHNOLOGY :: CHENNAI

Affiliated to Anna University, Chennai & Approved by AICTE
Accredited by NAAC with 'A' Grade & ISO 9001:2015 Certified Institution



Avadi, Tamil Nadu, India
4469+46F, Avadi, Tamil Nadu 600077, India
Lat 13.110611°
Long 80.117959°
23/03/23 01:36 PM GMT +05:30



Chennai, Tamil Nadu, India
No.2838, Tonakala Camp Road TNHB Ayappakkam
opp EB Office, Vivekananda Nagar, Chennai, Tamil
Nadu 600077, India
Lat 13.111661°
Long 80.119343°
13/03/23 01:44 PM GMT +05:30

Avadi, Tamil Nadu, India
4469+46F, Avadi, Tamil Nadu 600077, India
Lat 13.110611°
Long 80.117959°
23/03/23 01:37 PM GMT +05:30

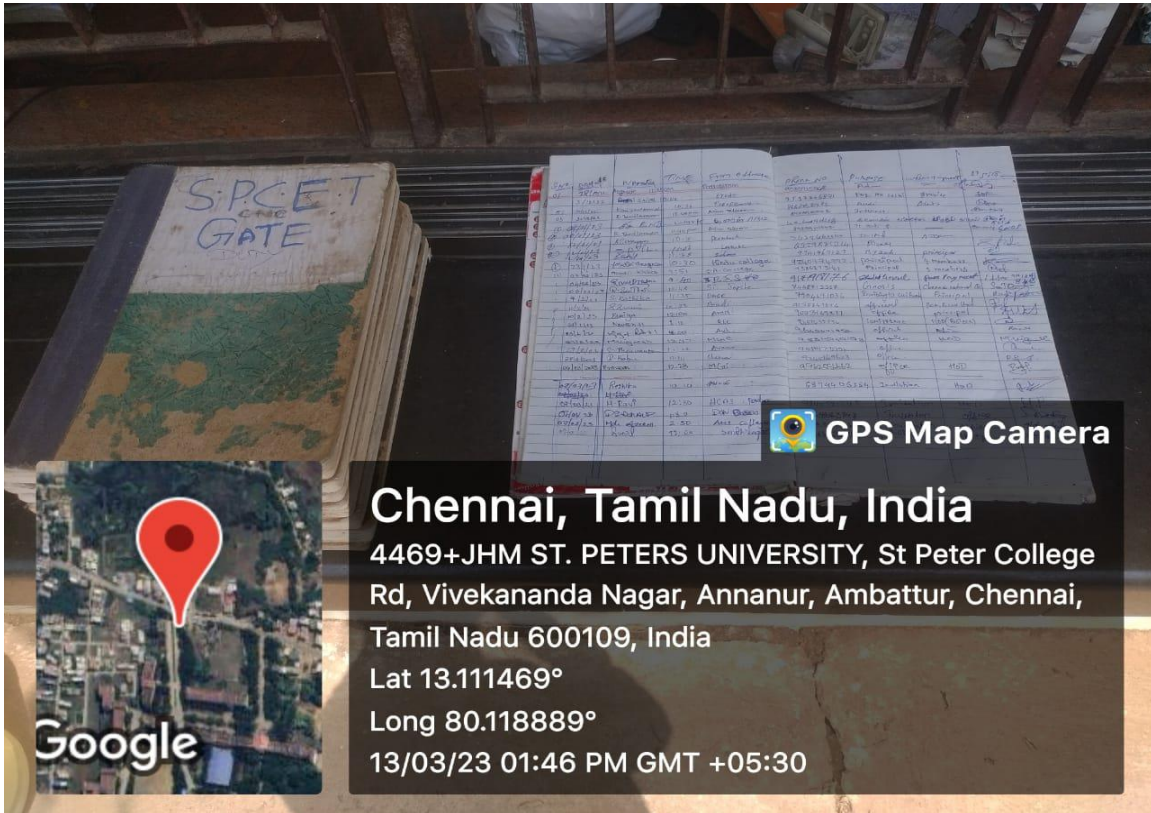
CCTV Monitor at security gate

CCTV Monitor at Principal's Room



St. PETER'S COLLEGE OF ENGINEERING AND TECHNOLOGY :: CHENNAI

Affiliated to Anna University, Chennai & Approved by AICTE
Accredited by NAAC with 'A' Grade & ISO 9001:2015 Certified Institution

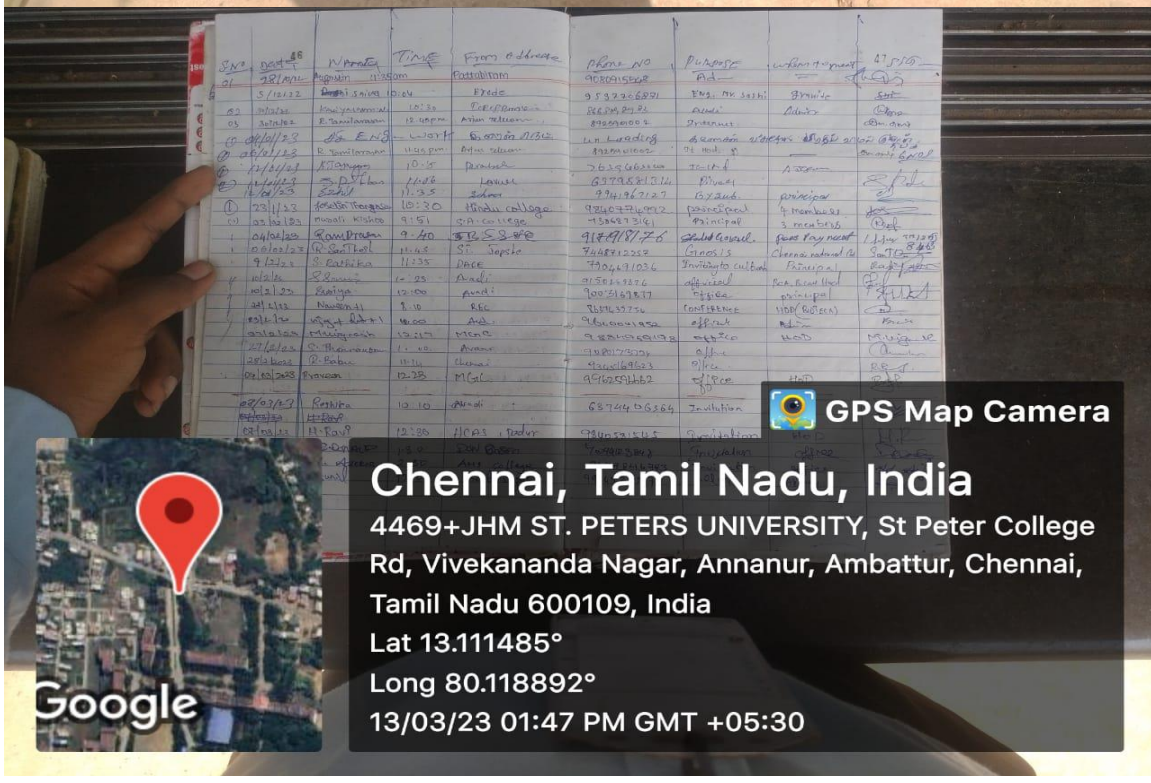


GPS Map Camera

Chennai, Tamil Nadu, India
4469+JHM ST. PETERS UNIVERSITY, St Peter College
Rd, Vivekananda Nagar, Annanur, Ambattur, Chennai,
Tamil Nadu 600109, India
Lat 13.111469°
Long 80.118889°
13/03/23 01:46 PM GMT +05:30

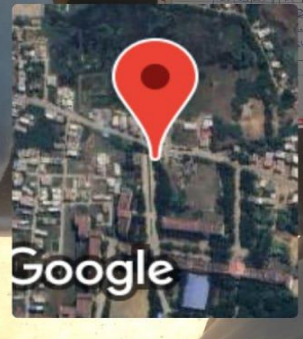


Google



GPS Map Camera

Chennai, Tamil Nadu, India
4469+JHM ST. PETERS UNIVERSITY, St Peter College
Rd, Vivekananda Nagar, Annanur, Ambattur, Chennai,
Tamil Nadu 600109, India
Lat 13.111485°
Long 80.118892°
13/03/23 01:47 PM GMT +05:30



Google

Entry Register

S.N	Date	Name	Time	From address	Phone NO	Address	What's app	Signature
01	08/03/23	Pravin	11:00am	Pravin	9840456008	Pravin		
02	08/03/23	Pravin	10:25	Pravin	9840456008	Pravin		
03	08/03/23	Pravin	12:00pm	Pravin	9840456008	Pravin		
04	08/03/23	Pravin	10:00am	Pravin	9840456008	Pravin		
05	08/03/23	Pravin	11:35	Pravin	9840456008	Pravin		
06	08/03/23	Pravin	10:30	Pravin	9840456008	Pravin		
07	08/03/23	Pravin	9:40	Pravin	9840456008	Pravin		
08	08/03/23	Pravin	11:25	Pravin	9840456008	Pravin		
09	08/03/23	Pravin	10:25	Pravin	9840456008	Pravin		
10	08/03/23	Pravin	11:35	Pravin	9840456008	Pravin		
11	08/03/23	Pravin	11:35	Pravin	9840456008	Pravin		
12	08/03/23	Pravin	11:35	Pravin	9840456008	Pravin		
13	08/03/23	Pravin	11:35	Pravin	9840456008	Pravin		
14	08/03/23	Pravin	11:35	Pravin	9840456008	Pravin		
15	08/03/23	Pravin	11:35	Pravin	9840456008	Pravin		
16	08/03/23	Pravin	11:35	Pravin	9840456008	Pravin		
17	08/03/23	Pravin	11:35	Pravin	9840456008	Pravin		
18	08/03/23	Pravin	11:35	Pravin	9840456008	Pravin		
19	08/03/23	Pravin	11:35	Pravin	9840456008	Pravin		
20	08/03/23	Pravin	11:35	Pravin	9840456008	Pravin		
21	08/03/23	Pravin	11:35	Pravin	9840456008	Pravin		
22	08/03/23	Pravin	11:35	Pravin	9840456008	Pravin		
23	08/03/23	Pravin	11:35	Pravin	9840456008	Pravin		
24	08/03/23	Pravin	11:35	Pravin	9840456008	Pravin		
25	08/03/23	Pravin	11:35	Pravin	9840456008	Pravin		
26	08/03/23	Pravin	11:35	Pravin	9840456008	Pravin		
27	08/03/23	Pravin	11:35	Pravin	9840456008	Pravin		
28	08/03/23	Pravin	11:35	Pravin	9840456008	Pravin		
29	08/03/23	Pravin	11:35	Pravin	9840456008	Pravin		
30	08/03/23	Pravin	11:35	Pravin	9840456008	Pravin		



St. PETER'S COLLEGE OF ENGINEERING AND TECHNOLOGY :: CHENNAI

Affiliated to Anna University, Chennai & Approved by AICTE
Accredited by NAAC with 'A' Grade & ISO 9001:2015 Certified Institution

2. Student Counseling

Students are periodically counseled in order to ward off any stress related issues therefore they can be physically and mentally strong and vibrant which results in better performance in the academic matters.

The students are advised on how to cope with different situations they tend to face in their college life. For instance, how should they talk politely or relate with their peers is constantly reiterated among the students. This advice will give them perspective on how should they behave in certain scenarios.

Students get comprehensive advice on career opportunities that enable them to make a proper and informed choice and understand what they can do after graduation.



Student Counseling



St. PETER'S COLLEGE OF ENGINEERING AND TECHNOLOGY :: CHENNAI

Affiliated to Anna University, Chennai & Approved by AICTE
Accredited by NAAC with 'A' Grade & ISO 9001:2015 Certified Institution



Student Counseling



St. PETER'S COLLEGE OF ENGINEERING AND TECHNOLOGY :: CHENNAI

Affiliated to Anna University, Chennai & Approved by AICTE
Accredited by NAAC with 'A' Grade & ISO 9001:2015 Certified Institution

3. Common room

- ❖ In each floor of girl's hostel, there is a separate common room. Students can spend their leisure time with the fellow students where valuable inputs can be shared among themselves.
- ❖ Common room is the place where ideas and valuable information is discussed and deliberated.
- ❖ The common room facilities the female students to take rest during health related difficulties.



Common room



St. PETER'S COLLEGE OF ENGINEERING AND TECHNOLOGY :: CHENNAI

Affiliated to Anna University, Chennai & Approved by AICTE
Accredited by NAAC with 'A' Grade & ISO 9001:2015 Certified Institution



Common room



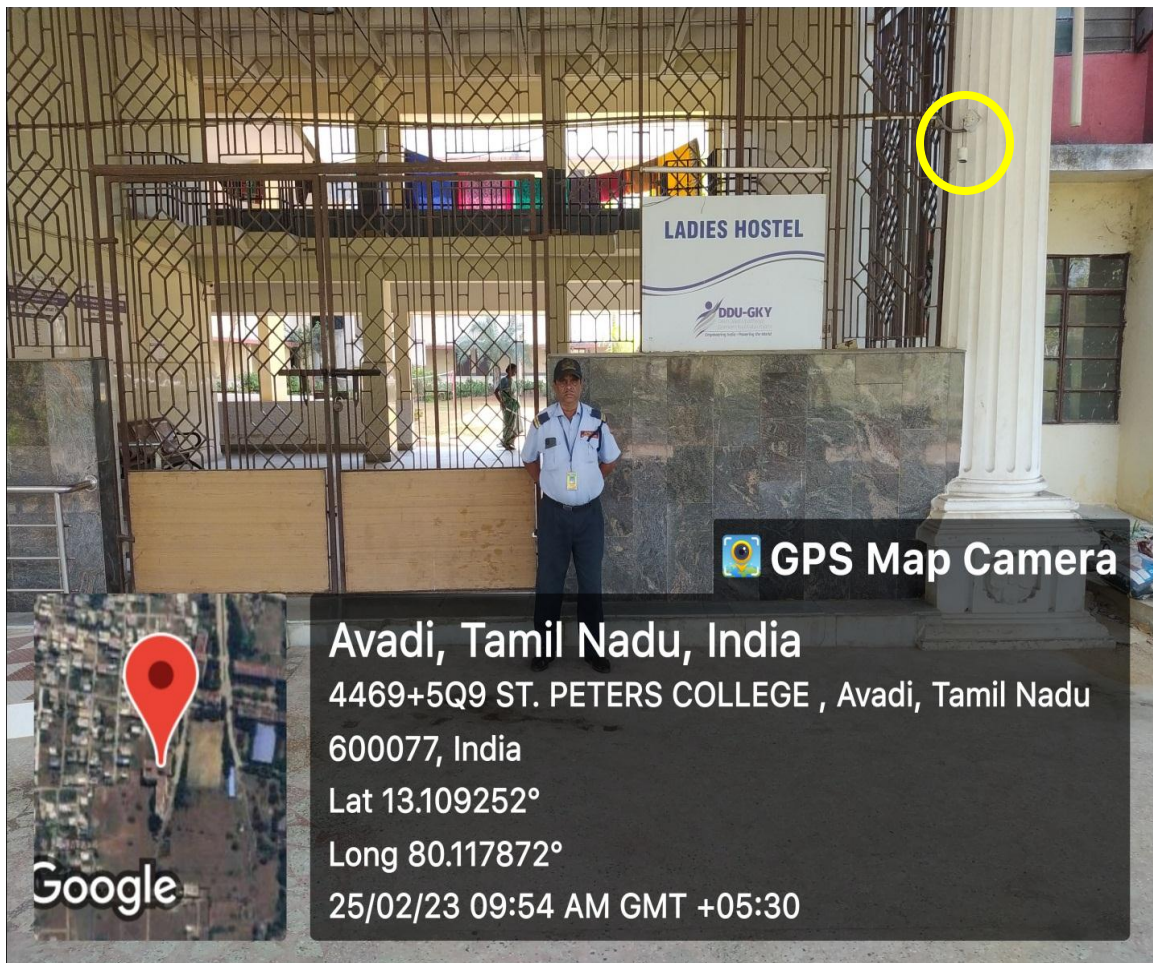
St. PETER'S COLLEGE OF ENGINEERING AND TECHNOLOGY :: CHENNAI

Affiliated to Anna University, Chennai & Approved by AICTE
Accredited by NAAC with 'A' Grade & ISO 9001:2015 Certified Institution

4. Ladies Hostels with CCTV Surveillance

In SPCET, we have well established and exclusive girls hostel with proper facilities in the campus. The hostel is being taken care of by female warden and supervisors. Duties of supervisors are arranged in such a manner that supervisors and security personnel are posted there for 24x7.

- Hostel wardens also reside within the hostel premises.
- Female sweepers are ensured in the hostel. Male members are not allowed in the hostel without due permissions.
- Behavior of the students is monitored based on the set of well-defined rules under the guidance of wardens.
- Grievances of hostel students are addressed by conducting meeting with the associate wardens at regular intervals.

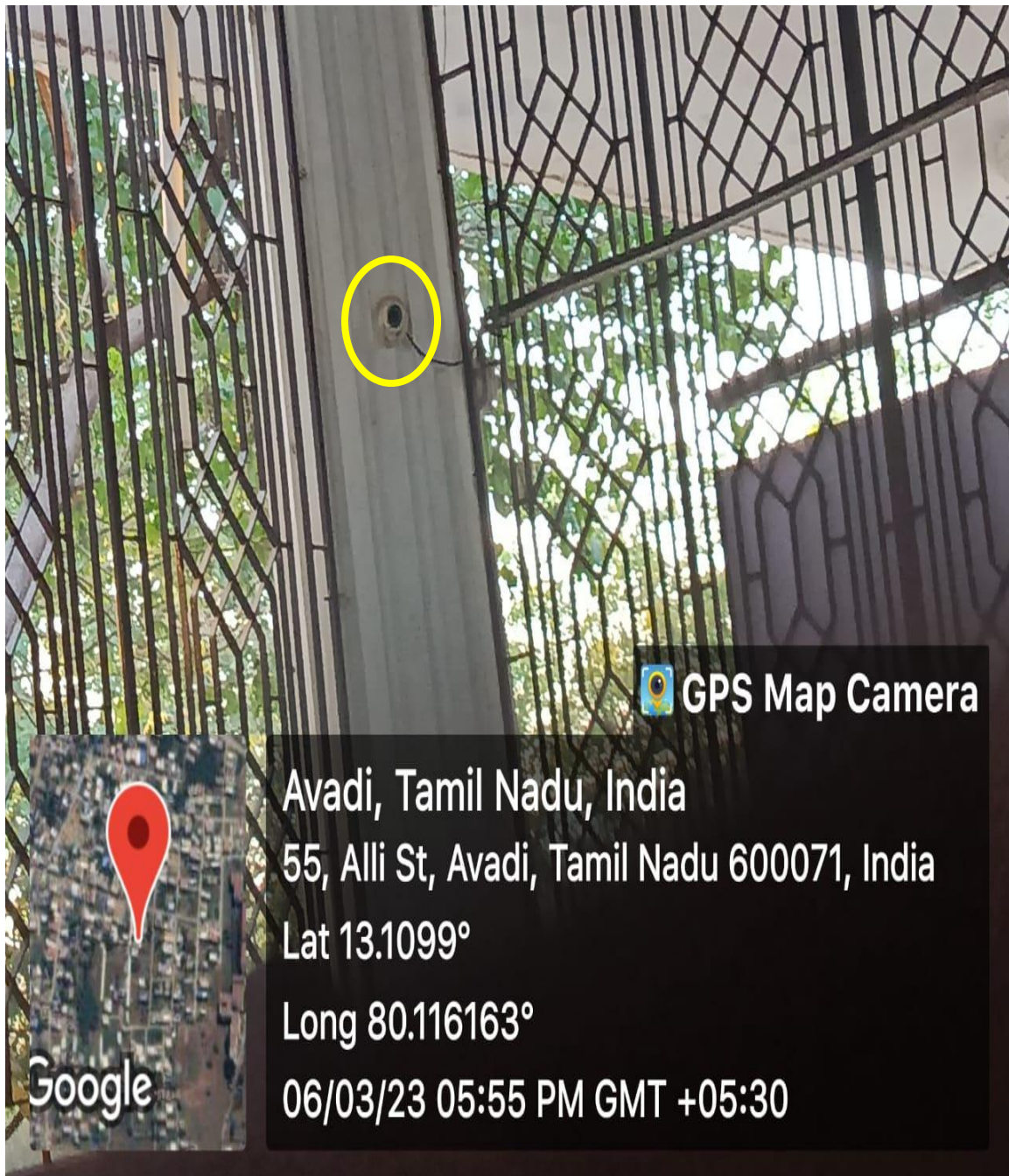


Hostel



St. PETER'S COLLEGE OF ENGINEERING AND TECHNOLOGY :: CHENNAI

Affiliated to Anna University, Chennai & Approved by AICTE
Accredited by NAAC with 'A' Grade & ISO 9001:2015 Certified Institution



CCTV Surveillance at girl's Hostel

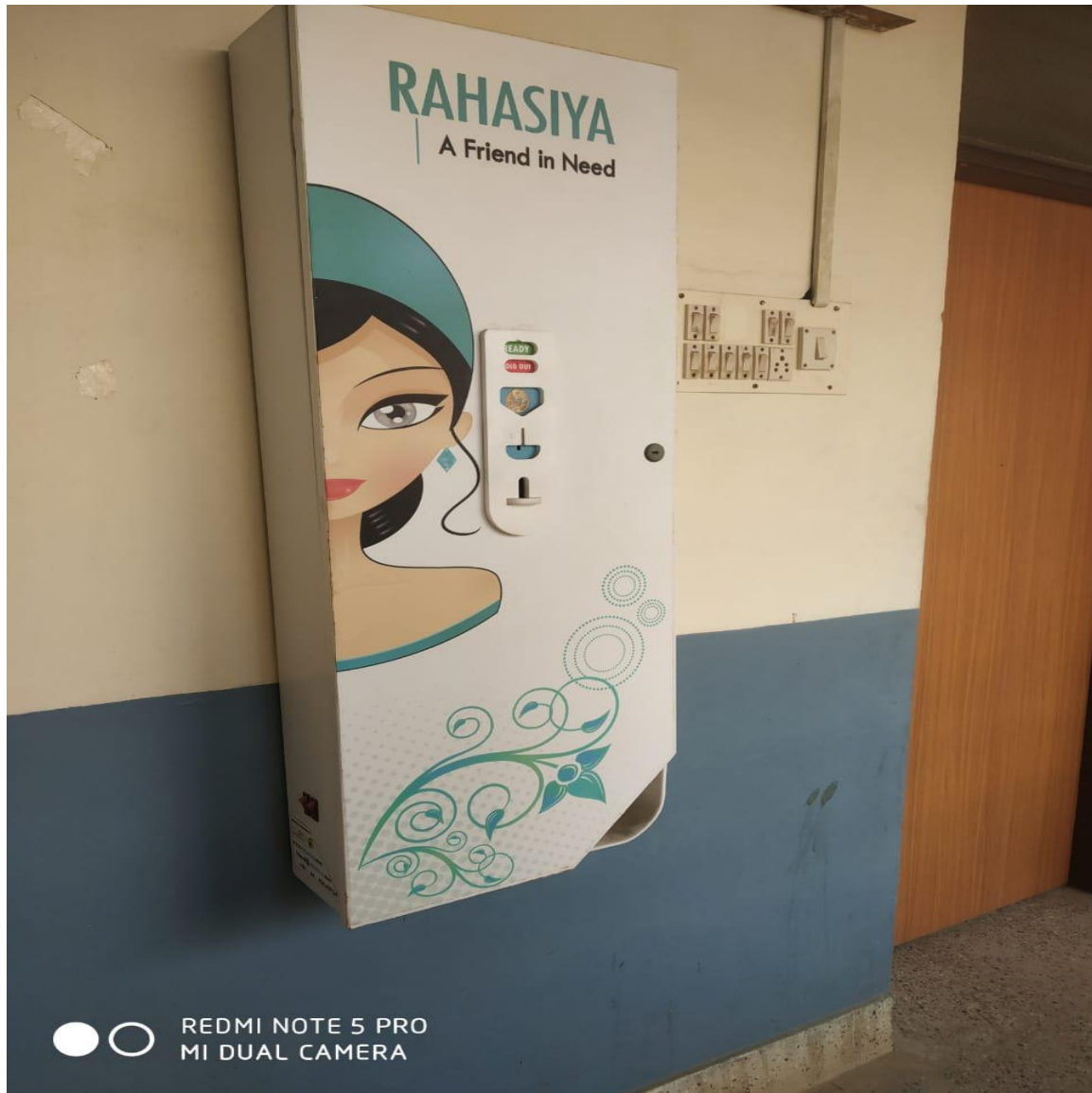


St. PETER'S COLLEGE OF ENGINEERING AND TECHNOLOGY :: CHENNAI

Affiliated to Anna University, Chennai & Approved by AICTE
Accredited by NAAC with 'A' Grade & ISO 9001:2015 Certified Institution

5. Sanitary Napkin Vending Machine

- ❖ Sanitary Napkin Vending Machine is installed inside the campus to promote hygiene.



Sanitary Napkin Vending Machine



St. PETER'S COLLEGE OF ENGINEERING AND TECHNOLOGY :: CHENNAI

Affiliated to Anna University, Chennai & Approved by AICTE
Accredited by NAAC with 'A' Grade & ISO 9001:2015 Certified Institution

6. Suggestion box

- ❖ Suggestion box is kept in Block II for students grievances.



Suggestion box